

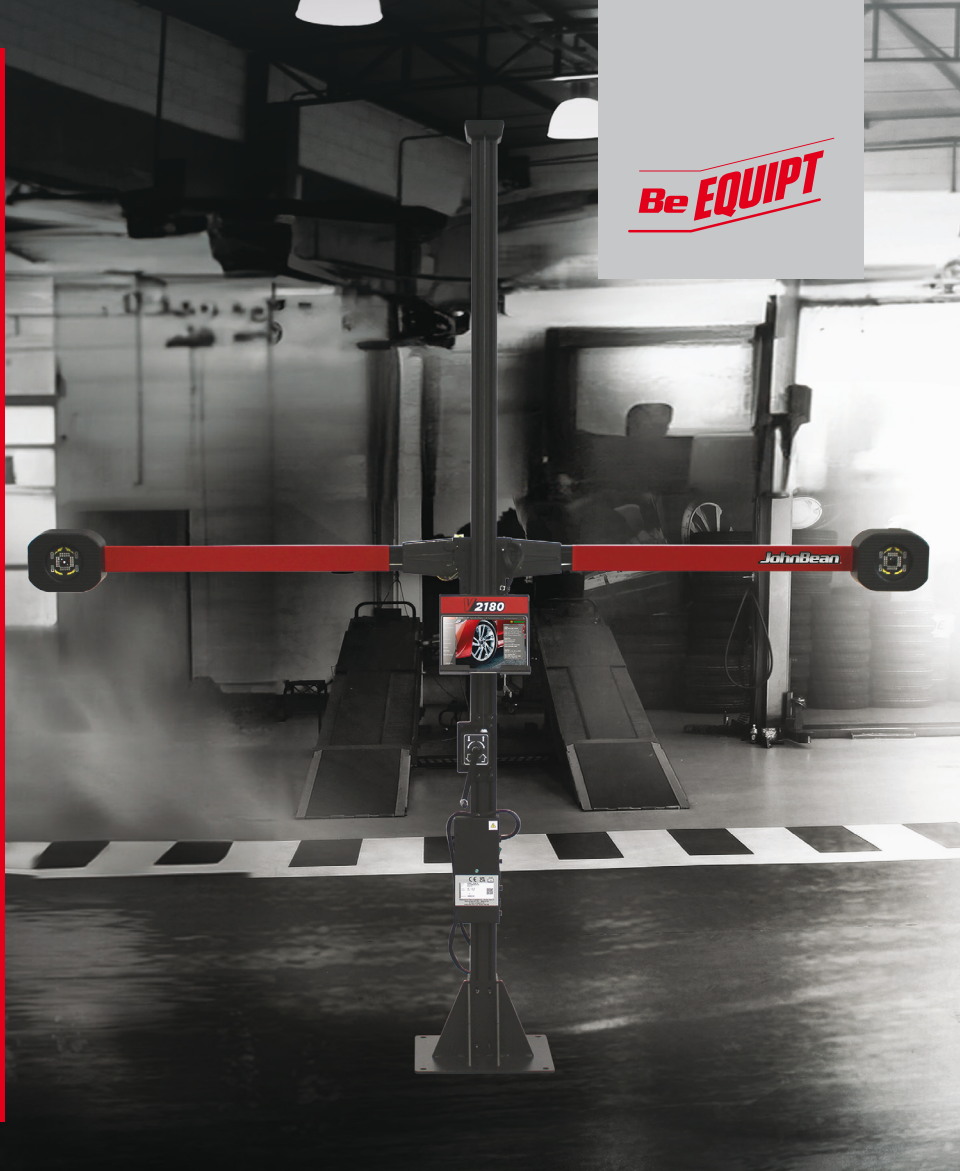
V2180

EXCEPTIONAL PERFORMANCE ENTRY-LEVEL PRICE

Looking to get started in wheel alignment service with minimal shop space to spare? The V2180 tablet-controlled wheel aligner is the perfect solution for entry-level shops looking for core alignment functionality in a compact, flexible design.

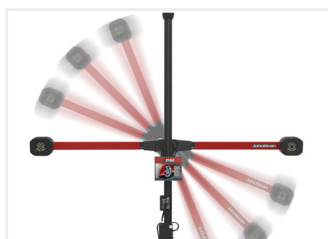
Full tablet control gives you the freedom to operate from anywhere in the shop while our advanced imaging software provides an optimised alignment flow for the most efficient and accurate process.

The V2180 wheel alignment system is the flexible solution for adding wheel alignment to your shop services.



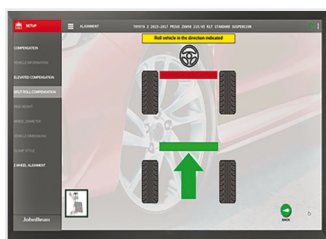
Be EQUIPT

TABLET CONTROLLED WHEEL ALIGNMENT SYSTEM



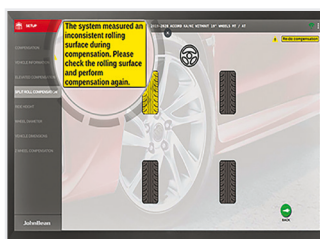
ROTATING CAMERA BEAM

Streamlined design for greater flexibility in smaller shops.



FAST COMPENSATION AND OPTIMISED ALIGNMENT FLOW

Enhance productivity and cut down on unnecessary steps with an intelligent, predictive alignment workflow that simplifies the alignment process.



ADVANCED NOTIFICATION SYSTEM

The advanced notification system provides critical information without slowing down the alignment process, automatically detecting and compensating suspension stress issues or environmental errors, only notifying the technician when necessary to provide additional information for corrective action.



VODI™

Our exclusive Vehicle Orientation Directional Indicator (VODI) guides technicians through the measurement process when the monitor is not in view, with simple, easy-to-follow red and green LED lighting; reducing the amount of time spent walking back and forth from the vehicle to the aligner.

WHEN GOOD ENOUGH ISN'T ENOUGH, JB.

JohnBean®

V2180

TABLET CONTROL

Full operational control by tablet for the most mobile alignment solution with any type of lift.

XD CAMERA TECHNOLOGY

Video speed cameras constantly monitor the alignment and immediately detect common environmental conditions or vehicle problems that can cause maladjustments.

SMALL FOOTPRINT

Maximise shop floor space with a simple and easy-to-install design.

AC100 CLAMPS WITH WALL-MOUNTED HANGERS

Fast and easy to use with self-centring design; two-sided claws provide reliable clamping, even over hub caps.

TECHNICAL SPECIFICATIONS

Wheel Diameter (AC100)	11"-22" 28-56cm
Track Width	48"-96" 122-244cm
Wheelbase	79"-180" 201-457cm
Power Supply	110-240V 50/60Hz

STANDARD ACCESSORIES

- iPad Tablet with Case
- AC100 Wheel Clamps
- Wheel Chocks
- Steering Wheel Holder
- Brake Pedal Depressor
- Wall-mounted Clamp Hangers

OPTIONAL ACCESSORIES

- Mobility Kit
- Mobile Clamp Stand
- 4" Clamp Extension Kit
- 2" Wheel Hub Extension
- Low-Profile Tyre Adapter
- Quick Clamp Kit

FIND A DISTRIBUTOR



UK
+44 118 929 6811

Snap-on® Total Shop Solutions offers a wide range of garage equipment solutions for workshops, garages, car dealers, and tyre shops, thanks to the specific solutions provided by its portfolio of premium brands. John Bean is a brand of TSS and is committed to product innovation and improvement. Therefore, specifications listed in this sell sheet may change without notice. ©2025 Snap-on Incorporated. John Bean is a trademark, registered in the United States and other countries, of Snap-on Incorporated. All rights reserved. All other marks are marks of their respective holders. sswa23105 (UK-en) 05/2025

