

V2300

RELIABLE ACCURACY MAXIMUM EFFICIENCY

The John Bean® V2300 brings together a classic, robust design with productivity-boosting software and high-speed camera technology to quickly and accurately align a variety of vehicle types.

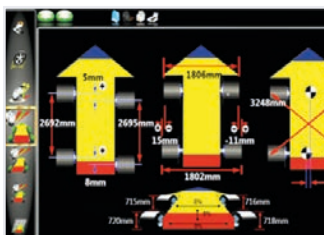
We've designed the V2300 wheel aligner to be an effective solution at the core of your shop's operations by including advanced dimensions such as wheel diameter, cross dimensions, and aftermarket OEM procedures. We've even created an extensive library of on-demand support videos to help technicians solve pesky alignment issues while performing alignment services.

High-end features without the high-end price, the V2300 is a perfect balance of old-school quality and new-school tech.



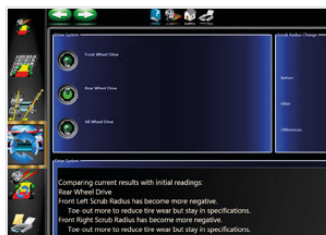
Be FAST

IMAGING WHEEL ALIGNMENT SYSTEM



ADVANCED DIMENSIONS

Cross Dimensions measurements identify frame or structural damage before alignment adjustments are made. Wheel Diameter identifies mismatched tyre sizes, a potential cause of vehicle pulling and drive train damage.



MODIFIED VEHICLES

Ensure accurate alignment for vehicles that have modified OEM specifications with our advanced alignment software that allows for effortless changes in procedure flow.



OEM PROCEDURES

The software provides the recommended procedures defined by the manufacturer and indicates the correct clamps for an accurate OEM-specified wheel alignment.



WHEELS OFF ADJUSTMENT

Remove the wheel and attach the target directly to a brake rotor for easier access to adjustment.

WHEN GOOD ENOUGH ISN'T ENOUGH, JB.

JohnBean

V2300

VODI™

Our exclusive Vehicle Orientation Directional Indicator (VODI) guides technicians through the measurement process when the monitor is not in view, with simple, easy-to-follow red and green LED lighting; reducing the amount of time spent walking back and forth from the vehicle to the aligner.

XD CAMERA TECHNOLOGY

Video speed cameras constantly monitor the alignment and immediately detect common environmental conditions or vehicle problems that can cause maladjustments.

AC100 CLAMPS

Fast and easy to use with self-centring design, two-sided claws provide reliable clamping, even over hub caps.



TECHNICAL SPECIFICATIONS

Wheel Diameter (AC100)	11"-22" 28-56cm
Track Width	48"-96" 122-244cm
Wheelbase	79"-180" 201-457cm
Power Supply	110-240V 50/60Hz

STANDARD ACCESSORIES

- AC400 Wheel Clamps
- 2x Wheel Chock
- Steering Wheel Holder
- Brake Pedal Depressor
- Printer

OPTIONAL ACCESSORIES

- VIN Scanner
- Mobility Kit
- Quick Clamp Kit
- 4" Extension Kit
- 2" Wheel Hub Extension

FIND A DISTRIBUTOR



AUSTRIA
+43 2641 24 5 24

FRANCE
+33 134 48 58 78

GERMANY
+49 8634 622 0

ITALY
+39 0522 733 411

Snap-on® Total Shop Solutions offers a wide range of garage equipment solutions for workshops, garages, car dealers, and tyre shops, thanks to the specific solutions provided by its portfolio of premium brands. John Bean is a brand of TSS and is committed to product innovation and improvement. Therefore, specifications listed in this sell sheet may change without notice. ©2023 Snap-on Incorporated. John Bean is a trademark, registered in the United States and other countries, of Snap-on Incorporated. All rights reserved. All other marks are marks of their respective holders. sswa22095a (EU en) 06/2023

