



# WHEEL BALANCER

ACCESSORY  
CATALOG

JohnBean

JohnBean

# INDEX

## AUTOMOBILE

- ▶ PRECISION TOOLING KITS **3-6**
- ▶ COLLETS KITS **6**
- ▶ ADDITIONAL ACCESSORIES **7-8**

## MOTORCYCLE

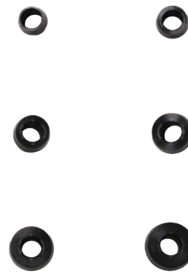
- ▶ MOTORCYCLE ACCESSORIES **9-10**

## HEAVY-DUTY

- ▶ HEAVY-DUTY ACCESSORIES **11**

FLANGE PLATE KIT WITH COLLETS

EAK0309J32B



**241E801-409**  
FLANGE PLATE #1

- » 4x 95.25, 98, 100, 101.6, 108, 114.3, 170mm | 3.75", 4", 4.5"
- » 7x 150mm

**251E801-409**  
FLANGE PLATE #2

- » 5x 98, 105, 108, 110, 115, 120.65, 135, 154.95mm | 4.75"

**251E901-409**  
FLANGE PLATE #3

- » 5x 100, 108, 112, 114.3, 120, 127, 130, 139.7, 150, 165.1mm | 4.5", 5", 5.5", 6.5"

**231E111-409**  
FLANGE PLATE #4

- » 3x 198, 112, 114.3, 115, 120, 127, 130, 132mm | 4.5", 5"
- » 4x 165.1mm | 6.5"
- » 6x 135, 139.7mm | 5.5"

**271-904-119**  
5 PINS

- » Rounded Pin
- » Head Ø 24.5mm
- » Length 90mm

**271-804-118**  
6 PINS

- » Short Tapered Pin
- » Head Ø 34.5mm
- » Length 80mm

**271-994-121**  
7 PINS

- » Long Tapered Pin
- » Head Ø 22.5mm
- » Length 100mm

**EAM0192G23A**  
COLLET #1

- » 48.3-61mm | 2.29-2.40"

**EAM0192G24A**  
COLLET #2

- » 55.9-68.6mm | 2.20-2.70"

**EAM0192G25A**  
COLLET #3

- » 63.50-76.2mm | 2.50-3.00"

**EAM0192G26A**  
COLLET #4

- » 71.1-83.8mm | 2.79-3.29"

**EAM0192G27A**  
COLLET #5

- » 78.7-91.4mm | 3.09-3.59"

**EAM0192G28A**  
COLLET #6

- » 86.4-99.1mm | 3.40-3.90"

**EAM0192G29A**  
COLLET #7

- » 94-106.7mm | 3.70-4.20"

**EAM0192G30A**  
COLLET #8

- » 101.6-114.3mm | 4.00-4.50"

**EAM0192G31A**  
COLLET #9

- » 109.2-121.9mm | 4.29-4.79"

**EAK0309J54A**  
SPACER KIT

**490-008-002**  
MEASURING TOOL

**EAK0309J67A**  
STORAGE STAND

FLANGE PLATE SET

200-008-402

**241E801-409**  
FLANGE PLATE #1

- » 4x 95.25, 98, 100, 101.6, 108, 114.3, 170mm | 3.75", 4", 4.5"
- » 7x 150mm

**251E801-409**  
FLANGE PLATE #2

- » 5x 98, 105, 108, 110, 115, 120.65, 135, 154.95mm | 4.75"

**251E901-409**  
FLANGE PLATE #3

- » 5x 100, 108, 112, 114.3, 120, 127, 130, 139.7, 150, 165.1mm | 4.5", 5", 5.5", 6.5"

**231E111-409**  
FLANGE PLATE #4

- » 3x 198, 112, 114.3, 115, 120, 127, 130, 132mm | 4.5", 5"
- » 4x 165.1mm | 6.5"
- » 6x 135, 139.7mm | 5.5"

**271-904-119**  
5 PINS

- » Rounded Pin
- » Head Ø 24.5mm
- » Length 90mm

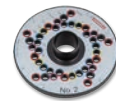
**271-804-118**  
6 PINS

- » Short Tapered Pin
- » Head Ø 34.5mm
- » Length 80mm

**271-994-121**  
7 PINS

- » Long Tapered Pin
- » Head Ø 22.5mm
- » Length 100mm

**490-008-002**  
MEASURING TOOL



**POWER CLAMP™ SPEED PLATE KIT WITH COLLETS**

**EAK0309J33C**



**1-55284A**  
POWER CLAMP SPEED PLATE 4 & 8-LUG  
» PCD Range: 92.25-180mm

**1-55384A**  
POWER CLAMP SPEED PLATE 5-LUG  
» PCD Range: 92.25-180mm

**1-55484A**  
POWER CLAMP SPEED PLATE 6-LUG  
» PCD Range: 92.25-180mm

**1-49784A**  
SHORT CONE SEAT STUD (6)  
» Head Ø 28mm  
» Body Length 25mm  
» Overall Length 80mm

**1-49884A**  
BALL SEAT STUD (6)  
» Head Ø 22.5mm  
» Body Length 40mm  
» Overall Length 95mm

**1-49984A**  
NARROW CONE SEAT STUD (6)  
» Head Ø 19mm  
» Body Length 40mm  
» Overall Length 95mm

**1-50084A**  
LONG BALL SEAT STUD (6)  
» Head Ø 22.5mm  
» Body Length 65mm  
» Overall Length 120mm

**EAM0192G23A**  
COLLET #1  
» 48.3-61mm | 2.29-2.40"

**EAM0192G24A**  
COLLET #2  
» 55.9-68.6mm | 2.20-2.70"

**EAM0192G25A**  
COLLET #3  
» 63.50-76.2mm | 2.50-3.00"

**EAM0192G26A**  
COLLET #4  
» 71.1-83.8mm | 2.79-3.29"

**EAM0192G27A**  
COLLET #5  
» 78.7-91.4mm | 3.09-3.59"

**EAM0192G28A**  
COLLET #6  
» 86.4-99.1mm | 3.40-3.90"

**EAM0192G29A**  
COLLET #7  
» 94-106.7mm | 3.70-4.20"

**EAM0192G30A**  
COLLET #8  
» 101.6-114.3mm | 4.00-4.50"

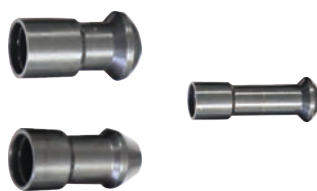
**EAM0192G31A**  
COLLET #9  
» 109.2-121.9mm | 4.29-4.79"

**EAK0309J54A**  
SPACER KIT

**EAK0309J67A**  
STORAGE STAND

**POWER CLAMP™ SPEED PLATE KIT**

**EAK0390G25A**



**1-55284A**  
POWER CLAMP SPEED PLATE 4 & 8-LUG  
» PCD Range: 92.25-180mm

**1-55384A**  
POWER CLAMP SPEED PLATE 5-LUG  
» PCD Range: 92.25-180mm

**1-55484A**  
POWER CLAMP SPEED PLATE 6-LUG  
» PCD Range: 92.25-180mm

**1-49784A**  
SHORT CONE SEAT STUD (6)  
» Head Ø 28mm  
» Body Length 25mm  
» Overall Length 80mm

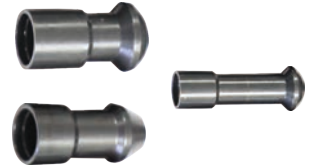
**1-49884A**  
BALL SEAT STUD (6)  
» Head Ø 22.5mm  
» Body Length 40mm  
» Overall Length 95mm

**1-49984A**  
NARROW CONE SEAT STUD (6)  
» Head Ø 19mm  
» Body Length 40mm  
» Overall Length 95mm

**1-50084A**  
LONG BALL SEAT STUD (6)  
» Head Ø 22.5mm  
» Body Length 65mm  
» Overall Length 120mm

**SPEED PLATE KIT**

**EAK0390G24A**



**1-54784A**  
SPEED PLATE 4 & 8-LUG  
» PCD Range: 92.25-180mm

**1-54884A**  
SPEED PLATE 5-LUG  
» PCD Range: 92.25-180mm

**1-54984A**  
SPEED PLATE 6-LUG  
» PCD Range: 92.25-180mm

**1-49784A**  
SHORT CONE SEAT STUD (6)  
» Head Ø 28mm  
» Body Length 25mm  
» Overall Length 80mm

**1-49884A**  
BALL SEAT STUD (6)  
» Head Ø 22.5mm  
» Body Length 40mm  
» Overall Length 95mm

**1-49984A**  
NARROW CONE SEAT STUD (6)  
» Head Ø 19mm  
» Body Length 40mm  
» Overall Length 95mm

**1-50084A**  
LONG BALL SEAT STUD (6)  
» Head Ø 22.5mm  
» Body Length 65mm  
» Overall Length 120mm

**SPEED PLATE SPARE PARTS**



**1-54784A**  
SPEED PLATE 4 & 8-LUG  
» PCD Range: 92.25-180mm

**1-54884A**  
SPEED PLATE 5-LUG  
» PCD Range: 92.25-180mm

**1-54984A**  
SPEED PLATE 6-LUG  
» PCD Range: 92.25-180mm



**1-49784A**  
SHORT CONE SEAT STUD (6)  
» Head Ø 28mm  
» Body Length 25mm  
» Overall Length 80mm

**1-49884A**  
BALL SEAT STUD (6)  
» Head Ø 22.5mm  
» Body Length 40mm  
» Overall Length 95mm



**1-49984A**  
NARROW CONE SEAT STUD (6)  
» Head Ø 19mm  
» Body Length 40mm  
» Overall Length 95mm

**1-50084A**  
LONG BALL SEAT STUD (6)  
» Head Ø 22.5mm  
» Body Length 65mm  
» Overall Length 120mm



**1-55684A**  
AUTO CLAMP HANDLE  
» For Power Clamp™ shaft

**E490-000-10**  
GEAR ASSEMBLY  
» For speed plate 1-49384a, 1-49484a, 1-49584a

**1-55784A**  
GEAR ASSEMBLY  
» For speed plate 1-54784a, 1-54884a, 1-54984a

**POWER CLAMP LIGHT TRUCK COLLET AND PIN PLATE KIT**

**280-818-158C**



**700-816-034**  
POWER CLAMP LIGHT TRUCK PIN PLATE  
» PIN PLATE  
» 4x 165.1, 170, 180, 200, 210, 225mm | 6.6"  
» 5x 184.15, 225mm | 7.25"

**160-400-086**  
SMALL COLLET  
» Double sided  
» 4.75-4.82" (120.6-122.49mm)  
» 4.87-4.95" (123.6-125.8mm)  
» Ford/RAM/GM single wheels  
» RAM dually wheel

**160-400-087**  
LARGE COLLET  
» Double sided  
» 5.52-5.62" (140.1-142.76mm)  
» 6.04-6.09" (153.4-154.75mm)  
» Ford/RAM/GM dually wheels

**700-008-035**  
CONICAL HEAD (5)  
» Head Ø 24.5mm  
» Length 66mm

**190E400-045**      **EAA0277D59A**  
SMALL SPACER      LARGE SPACER

**LIGHT TRUCK COLLET AND PIN PLATE KIT**

**280-400-158C**



**700-400-034**  
LIGHT TRUCK PIN PLATE  
» PIN PLATE  
» 4x 165.1, 170, 180, 200, 210, 225mm | 6.6"  
» 5x 184.15, 225mm | 7.25"

**160-400-086**  
SMALL COLLET  
» Double sided  
» 4.75-4.82" (120.6-122.49mm)  
» 4.87-4.95" (123.6-125.8mm)\*  
» Ford/RAM/GM single wheels  
» RAM dually wheel

**160-400-087**  
LARGE COLLET  
» Double sided  
» 5.52-5.62" (140.1-142.76mm)  
» 6.04-6.09" (153.4-154.75mm)  
» Ford/RAM/GM dually wheels

**700-008-035**  
CONICAL HEAD (5)  
» Head Ø 24.5mm  
» Length 66mm

**190E400-045**      **EAA0277D59A**  
SMALL SPACER      LARGE SPACER

**LIGHT TRUCK COLLET AND PIN PLATE KIT - SPARE PARTS**



**700-816-034**  
POWER CLAMP LIGHT TRUCK PIN PLATE  
» PIN PLATE  
» 4x 165.1, 170, 180, 200, 210, 225mm | 6.6"  
» 5x 184.15, 225mm | 7.25"  
» Pin plate only, without pins



**700-400-034**  
LIGHT TRUCK PIN PLATE  
» PIN PLATE  
» 4x 165.1, 170, 180, 200, 210, 225mm | 6.6"  
» 5x 184.15, 225mm | 7.25"  
» Pin plate only, without pins



**160-400-086**  
SMALL COLLET  
» Double sided  
» 4.75-4.82" (120.6-122.49mm)  
» 4.87-4.95" (123.6-125.8mm)  
» Ford/RAM/GM single wheels  
» RAM dually wheel



**160-400-087**  
LARGE COLLET  
» Double sided  
» 5.52-5.62" (140.1-142.76mm)  
» 6.04-6.09" (153.4-154.75mm)  
» Ford/RAM/GM dually wheels



**700-008-036**  
LONG SPARE PIN\*  
» Head Ø 24.5mm  
» Length 90mm  
» \* 5 pins required to be used with the flange



**700-008-035**  
SHORT SPARE PIN\*  
» Head Ø 24.5mm  
» Length 66mm  
» \* 5 pins required to be used with the flange



**EAA0277D59A**  
LARGE SPACER  
**190E400-045**  
SMALL SPACER

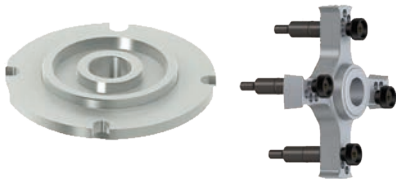
**GMC SIERRA CENTERING KIT**  
**280 400 113**

**CENTERING DISK**

- » Hub pilot disk, double-sided
- » Ø 154mm / Ø 124mm

**4-ARM LUG ADAPTER**

- » Ø 170/180/200/210/225mm



**HUB PILOT DISK**  
**160-400-048**

**HUB PILOT DISK**

- » Ø 170.15mm / Ø 142.1mm
- » Recommended with: Pin Plate PN 700-816-034/700-400-034 or Clamping Plate PN EAA0307G82A
- » Ford/GM/RAM 19.5" with 170.1mm center bore



**LIGHT TRUCK ADAPTER KIT**  
**280 400 075**

**CENTERING DISK**

- » Ø 161mm

**3-ARM STAR**

- » PCD 205MM



**STANDARD TOOLING KIT**  
**EAK0309J31B**

**EAM0192G23A**

**COLLET #1**

- » 48.3-61mm | 2.29-2.40"

**EAM0192G24A**

**COLLET #2**

- » 55.9-68.6mm | 2.20-2.70"

**EAM0192G25A**

**COLLET #3**

- » 63.50-76.2mm | 2.50-3.00"

**EAM0192G26A**

**COLLET #4**

- » 71.1-83.8mm | 2.79-3.29"

**EAM0192G27A**

**COLLET #5**

- » 78.7-91.4mm | 3.09-3.59"

**EAM0192G28A**

**COLLET #6**

- » 86.4-99.1mm | 3.40-3.90"

**EAM0192G29A**

**COLLET #7**

- » 94-106.7mm | 3.70-4.20"

**EAM0192G30A**

**COLLET #8**

- » 101.6-114.3mm | 4.00-4.50"

**EAM0192G31A**

**COLLET #9**

- » 109.2-121.9mm | 4.29-4.79"



**EAK0309J54A**  
SPACER KIT

**EAA0307G82A**  
CLAMPING PLATE

**EAK0309J67A**  
STORAGE STAND

**NINE COLLET SET**  
**EAK0375G07A**

**EAM0192G23A**

**COLLET #1**

- » 48.3-61mm | 2.29-2.40"

**EAM0192G24A**

**COLLET #2**

- » 55.9-68.6mm | 2.20-2.70"

**EAM0192G25A**

**COLLET #3**

- » 63.50-76.2mm | 2.50-3.00"

**EAM0192G26A**

**COLLET #4**

- » 71.1-83.8mm | 2.79-3.29"

**EAM0192G27A**

**COLLET #5**

- » 78.7-91.4mm | 3.09-3.59"

**EAM0192G28A**

**COLLET #6**

- » 86.4-99.1mm | 3.40-3.90"

**EAM0192G29A**

**COLLET #7**

- » 94-106.7mm | 3.70-4.20"

**EAM0192G30A**

**COLLET #8**

- » 101.6-114.3mm | 4.00-4.50"

**EAM0192G31A**

**COLLET #9**

- » 109.2-121.9mm | 4.29-4.79"



**#10 COLLET**  
**EAM0209G06A**

**EAM0209G06A**

**#10 COLLET**

- » 120-126.5mm | 4.72-4.98"
- » must be used with
- » EAA0277D59A large spacer disc
- » and/or EAC0058D68A spacer ring



**QUICK NUT PRESSURE CUPS**



**8-02040A2**  
PRESSURE CUP

» For use with Quick Nut (HD) 140-405-012

**001 1041 0000**  
PROTECTIVE RING

» For use with Quick Nut (HD) 140-405-012

**EAA0307682A**  
CLAMPING PLATE

**EAC0058D07A**  
PRESSURE CUP

» For use with Quick Nut (standard) EAA0263G66A

**EAC0058D15A**  
PROTECTIVE RING

» For use with Quick Nut (standard) EAA0263G66A

**HEAVY-DUTY QUICK NUT HANDLE**

**124-405-006**

**QUICK NUT (HD)**

» 40mm shaft

**8-02040A2**  
PRESSURE CUP

» For use with Quick Nut (HD) 140-405-012

**001 1041 0000**  
PROTECTIVE RING

» For use with Quick Nut (HD) 140-405-012

**8-02040A1**  
PRESSURE RING

For use with passenger cars and heavy-duty trucks



**QUICK NUT REPLACEMENT HANDLE**

**ST0027008**

**REPLACEMENT HANDLE**

» For use with Quick Nut (standard) EAA0263G66A



**QUICK NUT PRESSURE RING**

**EAC0058D08A**

For use with Quick Nut (standard) EAA0263G66A



**QUICK NUT (STANDARD)**

**EAA0263G66A**

**EAA0263G66A**  
QUICK NUT (STANDARD)

» 40mm shaft

» For use with passenger cars only



**UNIVERSAL WHEEL LIFT**

**EAK0306G66A**

- » Pneumatic actuator
- » Foot-pedal control
- » Max weight: 153 lbs.
- » Max lift: 20"
- » WxDxH: 49" x 25" x 38"



» NOT for use with integrated hood balancers or heavy-duty balancers

**WHEEL LIFT**

**EAA0502G51A**

- » Pneumatic actuator
- » Hand activated
- » Dual pneumatic speed
- » Max weight: 153 lbs.
- » Max lift: 20"
- » WxDxH: 46" x 21" x 33"



» NOT for use with integrated hood balancers or heavy-duty balancers

**STORAGE STAND**

**EAK0309J67A**

- » Mobile storage stand for wheel balancing accessories



**RETROFIT KIT FOR PINS**

**EAK0341G70A**

- » 18 bolts
- » 18 nuts
- » For use with EAK0309J67A



**BASIC LIGHT TRUCK CONE KIT**

**8100068**

**EAM0050J23A**  
LIGHT TRUCK CONE  
» 107.19-174mm | 4.25"-6.85"

**EAA0277D59A**  
LARGE SPACER DISK

**EAG0058D68A**  
SPACER RING



**WEIGHT PLIERS**

**000 5883 9000**

- » Wheel weight remover
- » Hammer tool



**SELF-CALIBRATION WEIGHT**

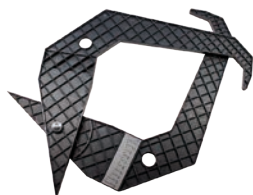
**EAM0005D40A**



**RIM WIDTH CALIPER**

**EAA0247G21A**

- » Manual measurement tool



**1" SPACER**

**EAA0346J75A**



**MOTORCYCLE ADAPTER KIT**

**EAA0260D80A**



**EAA0227D29A**  
14MM ADAPTER SHAFT

**EAM0005D79A**  
KNURLED NUT M14

**EAM0005D62A**  
GAUGE EXTENSION

**8-01550A**  
ARBOR WRENCH



**EAM0005D83A**  
BUSHING  
» 25x14x40mm

**EAM0005D80A**  
BMW BUSHING (2 PCS)  
» 17x14x25mm

**EAM0005D77A**  
BUSHING  
» 20x14x40mm



**EAM0005D78A**  
BUSHING  
» 17x14x40mm

**EAM0005D82A**  
CENTERING CONE (2 PCS)

**EAM0005D76A**  
BMW CONE (2 PCS)



**EAM0005D81A**  
SPACER (2 PCS)  
» 25x14x15mm

**SUZUKI, NTV & MOTO GUZZI V11**

**EAA0277D07A**

**CONE SET**  
» For use with 14mm shaft  
» For use with EAA0260D80A



**APRILLA REAR MONO-LEVER**

**EAA0277D11A**

» For use with EAA0260D80A



**BMW MONO-LEVER**

**EAA0260D16A**

» For use with EAA0260D80A



**HONDA OR YAMAHA MONO-LEVER**

**EAA0277D09A**

» For use with EAA0260D80A



**10MM SHAFT ADAPTER**  
**EAA0277D03A**

- » 10mm Shaft Adapter
- » Shaft Length: 205mm
- » For use with EAA0260D80A



**EXTENDED SHAFT ADAPTER**  
**EAA0277D29A**

- » Extended Shaft Adapter
- » Shaft Length: 284.5mm
- » Shaft Diameter: 14mm
- » For use with EAA0260D80A



**3/4" HARLEY DAVIDSON SHAFT ADAPTER**  
**EAA0277D22A**

- » 3/4" Harley Davidson shaft adapter with 1" bushing
- » Shaft Length: 210mm
- » For use with EAA0260D80A



**DUCATI OR TRIUMPH MONO-LEVER ADAPTER**  
**EAA0277D20A**

- » For use with EAA0260D80A
- » Must use with 3/4" shaft adapter EAA0277D22A



**HARLEY DAVIDSON SHAFT ADAPTER**  
**2005540**

- » Shaft Ø 3/4"
- » Bushing Ø 1" | 25mm
- » Shaft Length: 404mm
- » For use with EAA0260D80A



HEAVY-DUTY WHEEL LIFT

EAA0346J58A

- » Pneumatic actuator
- » Hand-operated control
- » Max weight 551 lbs.
- » Max lift 18"
- » WxDxH: 41" x 23" x 21"
- » For heavy-duty balancers only



CENTERING ARMS

EAA0307G80A

PROFESSIONAL 4-STAR CENTERING ARM

- » Fits 4x 275/285mm



PROFESSIONAL 5-STAR CENTERING ARM

- » Fits 10x 335mm
- » 10x 285.75mm
- » 10x 225.25mm



WING NUT

140 404 119

- » For units assembled after 10/2021



PASSENGER CAR SPACER

190 818 004

- » For units assembled after 10/2021



REPLACEMENT TRUCK STUD

1921003

- » Fits professional 4 & 5-star centering arms
- » Includes knurled nut Length 55mm
- » Ø 17-33.5mm



REPLACEMENT TRUCK STUD

112105000

- » Fits professional 4 & 5-centering arms
- » Includes knurled
- » Length 58mm
- » Ø 17-38mm



REPLACEMENT KNURLED NUT

112106000

- » Fits truck stud 1921003
- » Fits truck stud 00112105000



SPARE PIN AND NUT

EAK0237J23A

700-008-034  
PIN

- » Wide conical head
- » Head Ø 40mm
- » Length 33.5mm



HEAVY-DUTY ACCESSORIES

EAM0050J24A  
CENTERING CONE  
» For truck wheels



8-00391A  
RIM WIDTH CALIPER  
» For truck wheels



EAA0260D32A  
HEAVY-DUTY SPACER



112292000  
CENTERING DISK  
» For truck wheels





Snap-on® Total Shop Solutions (TSS) offers a wide range of equipment solutions for workshops, garages, car dealers, and tire shops, thanks to the specific solutions provided by its portfolio of premium brands. As a brand of TSS, John Bean is committed to providing innovative and reliable wheel solutions to the auto repair industry. Therefore, specifications listed in this sell sheet may change without notice. ©2025 Snap-on Incorporated. John Bean is a trademark, registered in the United States and other countries, of Snap-on Incorporated. All rights reserved. All other marks are marks of their respective holders. ss3120t (NA\_en) 01/2026

