



# WHEEL BALANCER

ACCESSORY  
CATALOG

John Bean

**John Bean**

# INDEX

## AUTOMOBILE

► PRECISION TOOLING KITS **3-6**

► COLLETS KITS **6**

► ADDITIONAL ACCESSORIES **7-8**

## MOTORCYCLE

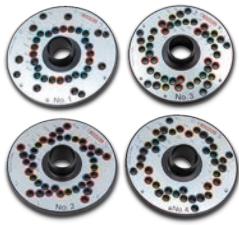
► MOTORCYCLE ACCESSORIES **9-10**

## HEAVY-DUTY

► HEAVY-DUTY ACCESSORIES **11**

## FLANGE PLATE KIT WITH COLLETS

## EAK0309J32B

**241E801-409**

## FLANGE PLATE #1

- » 4x 95.25, 98, 100, 101.6, 108, 114.3, 170mm | 3.75", 4", 4.5"
- » 7x 150mm

**251E801-409**

## FLANGE PLATE #2

- » 5x 98, 105, 108, 110, 115, 120.65, 135, 154.95mm | 4.75"

**251E901-409**

## FLANGE PLATE #3

- » 5x 100, 108, 112, 114.3, 120, 127, 130, 139.7, 150, 165.1mm | 4.5", 5", 5.5", 6.5"

**231E111-409**

## FLANGE PLATE #4

- » 3x 198, 112, 114.3, 115, 120, 127, 130, 132mm | 4.5", 5"
- » 4x 165.1mm | 6.5"
- » 6x 135, 139.7mm | 5.5"

**271-904-119**

## 5 PINS

- » Rounded Pin
- » Head Ø 24.5mm
- » Length 90mm

**271-804-118**

## 6 PINS

- » Short Tapered Pin
- » Head Ø 34.5mm
- » Length 80mm

**271-994-121**

## 7 PINS

- » Long Tapered Pin
- » Head Ø 22.5mm
- » Length 100mm

**EAM0192G23A**

## COLLET #1

- » 48.3-61mm | 2.29-2.40"

**EAM0192G24A**

## COLLET #2

- » 55.9-68.6mm | 2.20-2.70"

**EAM0192G25A**

## COLLET #3

- » 63.50-76.2mm | 2.50-3.00"

**EAM0192G26A**

## COLLET #4

- » 71.1-83.8mm | 2.79-3.29"

**EAM0192G27A**

## COLLET #5

- » 78.7-91.4mm | 3.09-3.59"

**EAM0192G28A**

## COLLET #6

- » 86.4-99.1mm | 3.40-3.90"

**EAM0192G29A**

## COLLET #7

- » 94-106.7mm | 3.70-4.20"

**EAM0192G30A**

## COLLET #8

- » 101.6-114.3mm | 4.00-4.50"

**EAM0192G31A**

## COLLET #9

- » 109.2-121.9mm | 4.29-4.79"

**EAK0309J54A**

## SPACER KIT

**490-008-002**

## MEASURING TOOL

**EAK0309J67A**

## STORAGE STAND

## FLANGE PLATE SET

## 200-008-402

**241E801-409**

## FLANGE PLATE #1

- » 4x 95.25, 98, 100, 101.6, 108, 114.3, 170mm | 3.75", 4", 4.5"
- » 7x 150mm

**251E801-409**

## FLANGE PLATE #2

- » 5x 98, 105, 108, 110, 115, 120.65, 135, 154.95mm | 4.75"

**251E901-409**

## FLANGE PLATE #3

- » 5x 100, 108, 112, 114.3, 120, 127, 130, 139.7, 150, 165.1mm | 4.5", 5", 5.5", 6.5"

**231E111-409**

## FLANGE PLATE #4

- » 3x 198, 112, 114.3, 115, 120, 127, 130, 132mm | 4.5", 5"
- » 4x 165.1mm | 6.5"
- » 6x 135, 139.7mm | 5.5"

**271-904-119**

## 5 PINS

- » Rounded Pin
- » Head Ø 24.5mm
- » Length 90mm

**271-804-118**

## 6 PINS

- » Short Tapered Pin
- » Head Ø 34.5mm
- » Length 80mm

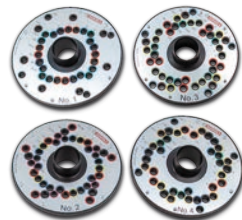
**271-994-121**

## 7 PINS

- » Long Tapered Pin
- » Head Ø 22.5mm
- » Length 100mm

**490-008-002**

## MEASURING TOOL



## POWER CLAMP™ SPEED PLATE KIT WITH COLLETS

## EAK0309J33C

**1-55284A**

## POWER CLAMP SPEED PLATE 4 &amp; 8-LUG

» PCD Range: 92.25-180mm

**1-55384A**

## POWER CLAMP SPEED PLATE 5-LUG

» PCD Range: 92.25-180mm

**1-55484A**

## POWER CLAMP SPEED PLATE 6-LUG

» PCD Range: 92.25-180mm

**1-49784A**

## SHORT CONE SEAT STUD (6)

» Head Ø 28mm

» Body Length 25mm

» Overall Length 80mm

**1-49884A**

## BALL SEAT STUD (6)

» Head Ø 22.5mm

» Body Length 40mm

» Overall Length 95mm

**1-49984A**

## NARROW CONE SEAT STUD (6)

» Head Ø 19mm

» Body Length 40mm

» Overall Length 95mm

**1-50084A**

## LONG BALL SEAT STUD (6)

» Head Ø 22.5mm

» Body Length 65mm

» Overall Length 120mm

**EAM0192G23A**

## COLLET #1

» 48.3-61mm | 2.29-2.40"

**EAM0192G24A**

## COLLET #2

» 55.9-68.6mm | 2.20-2.70"

**EAM0192G25A**

## COLLET #3

» 63.50-76.2mm | 2.50-3.00"

**EAM0192G26A**

## COLLET #4

» 71.1-83.8mm | 2.79-3.29"

**EAM0192G27A**

## COLLET #5

» 78.7-91.4mm | 3.09-3.59"

**EAM0192G28A**

## COLLET #6

» 86.4-99.1mm | 3.40-3.90"

**EAM0192G29A**

## COLLET #7

» 94-106.7mm | 3.70-4.20"

**EAM0192G30A**

## COLLET #8

» 101.6-114.3mm | 4.00-4.50"

**EAM0192G31A**

## COLLET #9

» 109.2-121.9mm | 4.29-4.79"

**EAK0309J54A**

## SPACER KIT

**EAK0309J67A**

## STORAGE STAND



## POWER CLAMP™ SPEED PLATE KIT

## EAK0390G25A

**1-55284A**

## POWER CLAMP SPEED PLATE 4 &amp; 8-LUG

» PCD Range: 92.25-180mm

**1-55384A**

## POWER CLAMP SPEED PLATE 5-LUG

» PCD Range: 92.25-180mm

**1-55484A**

## POWER CLAMP SPEED PLATE 6-LUG

» PCD Range: 92.25-180mm

**1-49784A**

## SHORT CONE SEAT STUD (6)

» Head Ø 28mm

» Body Length 25mm

» Overall Length 80mm

**1-49884A**

## BALL SEAT STUD (6)

» Head Ø 22.5mm

» Body Length 40mm

» Overall Length 95mm

**1-49984A**

## NARROW CONE SEAT STUD (6)

» Head Ø 19mm

» Body Length 40mm

» Overall Length 95mm

**1-50084A**

## LONG BALL SEAT STUD (6)

» Head Ø 22.5mm

» Body Length 65mm

» Overall Length 120mm

## SPEED PLATE KIT

## EAK0390G24A

**1-54784A**

## SPEED PLATE 4 &amp; 8-LUG

» PCD Range: 92.25-180mm

**1-54884A**

## SPEED PLATE 5-LUG

» PCD Range: 92.25-180mm

**1-54984A**

## SPEED PLATE 6-LUG

» PCD Range: 92.25-180mm

**1-49784A**

## SHORT CONE SEAT STUD (6)

» Head Ø 28mm

» Body Length 25mm

» Overall Length 80mm

**1-49884A**

## BALL SEAT STUD (6)

» Head Ø 22.5mm

» Body Length 40mm

» Overall Length 95mm

**1-49984A**

## NARROW CONE SEAT STUD (6)

» Head Ø 19mm

» Body Length 40mm

» Overall Length 95mm

**1-50084A**

## LONG BALL SEAT STUD (6)

» Head Ø 22.5mm

» Body Length 65mm

» Overall Length 120mm

## SPEED PLATE SPARE PARTS

**1-54784A****SPEED PLATE 4 & 8-LUG**

» PCD Range: 92.25-180mm

**1-54884A****SPEED PLATE 5-LUG**

» PCD Range: 92.25-180mm

**1-54984A****SPEED PLATE 6-LUG**

» PCD Range: 92.25-180mm

**1-49784A****SHORT CONE SEAT STUD (1)**

» Head Ø 28mm  
 » Body Length 25mm  
 » Overall Length 80mm

**1-49884A****BALL SEAT STUD (1)**

» Head Ø 22.5mm  
 » Body Length 40mm  
 » Overall Length 95mm

**1-49984A****NARROW CONE SEAT STUD (1)**

» Head Ø 19mm  
 » Body Length 40mm  
 » Overall Length 95mm

**1-50084A****LONG BALL SEAT STUD (1)**

» Head Ø 22.5mm  
 » Body Length 65mm  
 » Overall Length 120mm

**1-55684A****AUTO CLAMP HANDLE**

» For Power Clamp™ shaft

**E490-000-10**  
**GEAR ASSEMBLY**

» For speed plate 1-49384a, 1-49484a, 1-49584a

**1-55784A****GEAR ASSEMBLY**

» For speed plate 1-54784a, 1-54884a, 1-54984a

## POWER CLAMP LIGHT TRUCK COLLET AND PIN PLATE KIT

**280-818-158C****700-816-034****POWER CLAMP LIGHT TRUCK PIN PLATE**

» PIN PLATE  
 » 4x 165.1, 170, 180, 200, 210, 225mm | 6.6"  
 » 5x 184.15, 225mm | 7.25"

**160-400-086****SMALL COLLET**

» Double sided  
 » 4.75-4.82" (120.6-122.49mm)  
 » 4.87-4.95" (123.6-125.8mm)  
 » Ford/RAM/GM single wheels  
 » RAM dually wheel

**160-400-087****LARGE COLLET**

» Double sided  
 » 5.52-5.62" (140.1-142.76mm)  
 » 6.04-6.09" (153.4-154.75mm)  
 » Ford/RAM/GM dually wheels

**700-008-035**  
**CONICAL HEAD (5)**

» Head Ø 24.5mm  
 » Length 66mm

**190E400-045** **EAA0277D59A**  
**SMALL SPACER** **LARGE SPACER**

## LIGHT TRUCK COLLET AND PIN PLATE KIT

**280-400-158C****700-400-034****LIGHT TRUCK PIN PLATE**

» PIN PLATE  
 » 4x 165.1, 170, 180, 200, 210, 225mm | 6.6"  
 » 5x 184.15, 225mm | 7.25"

**160-400-086****SMALL COLLET**

» Double sided  
 » 4.75-4.82" (120.6-122.49mm)  
 » 4.87-4.95" (123.6-125.8mm)  
 » Ford/RAM/GM single wheels  
 » RAM dually wheel

**160-400-087****LARGE COLLET**

» Double sided  
 » 5.52-5.62" (140.1-142.76mm)  
 » 6.04-6.09" (153.4-154.75mm)  
 » Ford/RAM/GM dually wheels

**700-008-035**  
**CONICAL HEAD (5)**

» Head Ø 24.5mm  
 » Length 66mm

**190E400-045** **EAA0277D59A**  
**SMALL SPACER** **LARGE SPACER**

## LIGHT TRUCK COLLET AND PIN PLATE KIT - SPARE PARTS

**700-816-034**  
**PIN PLATE**

» 4x 165.1, 170, 180, 200, 210, 225mm | 6.6"  
 » 5x 184.15, 225mm | 7.25"  
*Pin plate only, without pins*

**700-400-034**  
**PIN PLATE**

» 4x 165.1, 170, 180, 200, 210, 225mm | 6.6"  
 » 5x 184.15, 225mm | 7.25"  
*Pin plate only, without pins*

**160-400-086**  
**SMALL COLLET**

» Double sided  
 » 4.75-4.82" (120.6-122.49mm)  
 » 4.87-4.95" (123.6-125.8mm)  
 » Ford/RAM/GM single wheels  
 » RAM dually wheel

**160-400-087**  
**LARGE COLLET**

» Double sided  
 » 5.52-5.62" (140.1-142.76mm)  
 » 6.04-6.09" (153.4-154.75mm)  
 » Ford/RAM/GM dually wheels

**700-008-036**  
**LONG SPARE PIN\***

» Head Ø 24.5mm  
 » Length 90mm

**700-008-035**  
**SHORT SPARE PIN\***

» Head Ø 24.5mm  
 » Length 66mm

\* 5 pins required to be used with the flange

**EAA0277D59A**  
**LARGE SPACER****190E400-045**  
**SMALL SPACER**

## GMC SIERRA CENTERING KIT

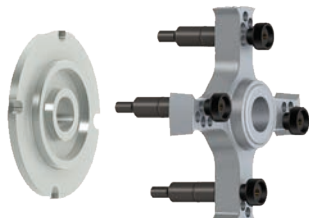
280 400 113

## CENTERING DISK

- » Hub pilot disk, double-sided
- » Ø 154mm / Ø 124mm

## 4-ARM LUG ADAPTER

- » Ø 170/180/200/210/225mm



## HUB PILOT DISK

160-400-048

## HUB PILOT DISK

- » Ø 170.15mm / Ø 142.1mm
- » Ford/GM/RAM 19.5" with 170.1mm center bore
- » Recommended with:  
Pin Plate PN 700-816-034/700-400-034  
or Clamping Plate PN EAA0307G82A



## LIGHT TRUCK ADAPTER KIT

280 400 075

## CENTERING DISK

- » Ø 161mm

## 3-ARM STAR

- » PCD 205MM



## STANDARD TOOLING KIT

EAK0309J31B

## EAM0192G23A

## COLLET #1

- » 48.3-61mm | 2.29-2.40"

## EAM0192G24A

## COLLET #2

- » 55.9-68.6mm | 2.20-2.70"

## EAM0192G25A

## COLLET #3

- » 63.50-76.2mm | 2.50-3.00"

## EAM0192G26A

## COLLET #4

- » 71.1-83.8mm | 2.79-3.29"

## EAM0192G27A

## COLLET #5

- » 78.7-91.4mm | 3.09-3.59"

## EAM0192G28A

## COLLET #6

- » 86.4-99.1mm | 3.40-3.90"

## EAM0192G29A

## COLLET #7

- » 94-106.7mm | 3.70-4.20"

## EAM0192G30A

## COLLET #8

- » 101.6-114.3mm | 4.00-4.50"

## EAM0192G31A

## COLLET #9

- » 109.2-121.9mm | 4.29-4.79"



## EAK0309J54A

## SPACER KIT

## EAA0307G82A

## CLAMPING PLATE

## EAK0309J67A

## STORAGE STAND

## NINE COLLET SET

EAK0375G07A

## EAM0192G23A

## COLLET #1

- » 48.3-61mm | 2.29-2.40"

## EAM0192G24A

## COLLET #2

- » 55.9-68.6mm | 2.20-2.70"

## EAM0192G25A

## COLLET #3

- » 63.50-76.2mm | 2.50-3.00"

## EAM0192G26A

## COLLET #4

- » 71.1-83.8mm | 2.79-3.29"

## EAM0192G27A

## COLLET #5

- » 78.7-91.4mm | 3.09-3.59"



## EAM0192G28A

## COLLET #6

- » 86.4-99.1mm | 3.40-3.90"

## EAM0192G29A

## COLLET #7

- » 94-106.7mm | 3.70-4.20"

## EAM0192G30A

## COLLET #8

- » 101.6-114.3mm | 4.00-4.50"

## EAM0192G31A

## COLLET #9

- » 109.2-121.9mm | 4.29-4.79"



## #10 COLLET

EAM0209G06A

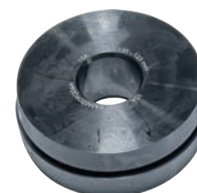
## EAM0209G06A

## COLLET #10

- » 120-126.5mm | 4.72-4.98"

*must be used with*

EAA0277D59A large spacer disc  
and/or EAC0058D68A spacer ring



## QUICK NUT PRESSURE CUPS



**8-02040A2**  
PRESSURE CUP

» For use with Quick Nut (HD) 140-405-012

**001 1041 0000**  
PROTECTIVE RING

» For use with Quick Nut (HD) 140-405-012



**EAA0307682A**  
CLAMPING PLATE



**EAC0058D07A**  
PRESSURE CUP

» For use with Quick Nut (standard) EAA0263G66A

**EAC0058D15A**  
PROTECTIVE RING

» For use with Quick Nut (standard) EAA0263G66A

## HEAVY-DUTY QUICK NUT HANDLE

**124-405-006**

QUICK NUT (HD)  
» 40mm shaft

**8-02040A2**  
PRESSURE CUP

**001 1041 0000**  
PROTECTIVE RING

**8-02040A1**  
PRESSURE RING

» For use with passenger cars  
and heavy-duty trucks



## QUICK NUT REPLACEMENT HANDLE

**ST0027008**

**REPLACEMENT HANDLE**

» For use with Quick Nut (standard)  
EAA0263G66A



## QUICK NUT PRESSURE RING

**EAC0058D08A**

» For use with Quick Nut (standard)  
EAA0263G66A



## QUICK NUT (STANDARD)

**EAA0263G66A**

**EAA0263G66A**  
QUICK NUT (STANDARD)

» 40mm shaft

» For use with  
passenger cars only



## UNIVERSAL WHEEL LIFT

**EAK0306G66A**

- » Pneumatic actuator
- » Foot-pedal control
- » Max weight: 153 lbs.
- » Max lift: 20"
- » WxDxH: 49" x 25" x 38"



» **NOT for use with integrated hood balancers or heavy-duty balancers**

## WHEEL LIFT

**EAA0502G51A**

- » Pneumatic actuator
- » Hand activated
- » Dual pneumatic speed
- » Max weight: 153 lbs.
- » Max lift: 20"
- » WxDxH: 46" x 21" x 33"



» **NOT for use with integrated hood balancers or heavy-duty balancers**

## STORAGE STAND

**EAK0309J67A**

- » Mobile storage stand for wheel balancing accessories



## RETROFIT KIT FOR PINS

**EAK0341G70A**

- » 18 bolts
- » 18 nuts
- » For use with EAK0309J67A



## BASIC LIGHT TRUCK CONE KIT

**8100068**

**EAM0050J23A**  
LIGHT TRUCK CONE

- » 107.19-174mm | 4.25"-6.85"

**EAA0277D59A**  
LARGE SPACER DISK

**EAC0058D68A**  
SPACER RING



## WEIGHT PLIERS

**000 5883 9000**

- » Wheel weight remover
- » Hammer tool



## SELF-CALIBRATION WEIGHT

**EAM0005D40A**

## RIM WIDTH CALIPER

**EAA0247G21A**

- » Manual measurement tool



## 1" SPACER

**EAA0346J75A**

## MOTORCYCLE ADAPTER KIT

## EAA0260D80A



**EAA0227D29A**  
14MM ADAPTER SHAFT

**EAM0005D79A**  
KNURLED NUT M14

**EAM0005D62A**  
GAUGE EXTENSION

**8-01550A**  
ARBOR WRENCH

**EAM0005D83A**  
BUSHING

» 25x14x40mm

**EAM0005D80A**  
BMW BUSHING (2 PCS)

» 17x14x25mm

**EAM0005D77A**  
BUSHING

» 20x14x40mm

**EAM0005D78A**  
BUSHING

» 17x14x40mm

**EAM0005D82A**  
CENTERING CONE (2 PCS)

**EAM0005D76A**  
BMW CONE (2 PCS)

**EAM0005D81A**  
SPACER (2 PCS)

» 25x14x15mm

## SUZUKI, NTV &amp; MOTO GUZZI V11

## EAA0277D07A

CONE SET

- » For use with 14mm shaft
- » For use with EAA0260D80A



## APRILLA REAR MONO-LEVER

## EAA0277D11A

- » For use with EAA0260D80A



## BMW MONO-LEVER

## EAA0260D16A

- » For use with EAA0260D80A



## HONDA OR YAMAHA MONO-LEVER

## EAA0277D09A

- » For use with EAA0260D80A



**10MM SHAFT ADAPTER****EAA0277D03A**

- » 10mm Shaft Adapter
- » Shaft Length: 205mm
- » For use with EAA0260D80A

**EXTENDED SHAFT ADAPTER****EAA0277D29A**

- » Extended Shaft Adapter
- » Shaft Length: 284.5mm
- » Shaft Diameter: 14mm
- » For use with EAA0260D80A

**3/4" HARLEY DAVIDSON SHAFT ADAPTER****EAA0277D22A**

- » 3/4" Harley Davidson shaft adapter with 1" bushing
- » Shaft Length: 210mm
- » For use with EAA0260D80A

**DUCATI OR TRIUMPH MONO-LEVER ADAPTER****EAA0277D20A**

- » For use with EAA0260D80A
- » Must use with 3/4" shaft adapter EAA0277D22A

**HARLEY DAVIDSON SHAFT ADAPTER****2005540**

- » Shaft Ø 3/4"
- » Bushing Ø 1" | 25mm
- » Shaft Length: 404mm
- » For use with EAA0260D80A



## HEAVY-DUTY WHEEL LIFT

**EAA0346J58A**

- » Pneumatic actuator
- » Hand-operated control
- » Max weight 551 lbs.
- » Max lift 18"
- » WxDxH: 41" x 23" x 21"



» For heavy-duty balancers only

## WING NUT

**140 404 119**

- » For units assembled after 10/2021



## REPLACEMENT TRUCK STUD

**1921003**

- » Fits professional 4 & 5-star centering arms
- » Includes knurled nut
- » Length 55mm
- » Ø 17-33.5mm



## REPLACEMENT KNURLED NUT

**00112106000**

- » Fits truck stud 1921003
- » Fits truck stud 00112105000



## CENTERING ARMS

**EAA0307G80A**

## PROFESSIONAL 4-STAR CENTERING ARM

- » Fits 4x 275/285mm

## PROFESSIONAL 5-STAR CENTERING ARM

- » Fits 10x 335mm
- » 10x 285.75mm
- » 10x 225.25mm



## PASSENGER CAR SPACER

**190 818 004**

- » For units assembled after 10/2021



## REPLACEMENT TRUCK STUD

**00112105000**

- » Fits professional 4 & 5-centering arms
- » Includes knurled
- » Length 58mm
- » Ø 17-38mm



## SPARE PIN AND NUT

**EAK0237J23A**700-008-034  
PIN

- » Wide conical head
- » Head Ø 40mm
- » Length 33.5mm



## HEAVY-DUTY ACCESSORIES

**EAM0050J24A**  
CENTERING CONE

- » For truck wheels

**8-00391A**  
RIM WIDTH CALIPER

- » For truck wheels

**EAA0260D32A**  
HEAVY-DUTY SPACER**00112292000**  
CENTERING DISK

- » For truck wheels





Snap-on® Total Shop Solutions (TSS) offers a wide range of equipment solutions for workshops, garages, car dealers, and tire shops, thanks to the specific solutions provided by its portfolio of premium brands. As a brand of TSS, John Bean is committed to providing innovative and reliable wheel solutions to the auto repair industry. Therefore, specifications listed in this sell sheet may change without notice. ©2025 Snap-on Incorporated. John Bean is a trademark, registered in the United States and other countries, of Snap-on Incorporated. All rights reserved. All other marks are marks of their respective holders. ss3120s (NA\_en) 04/2025

